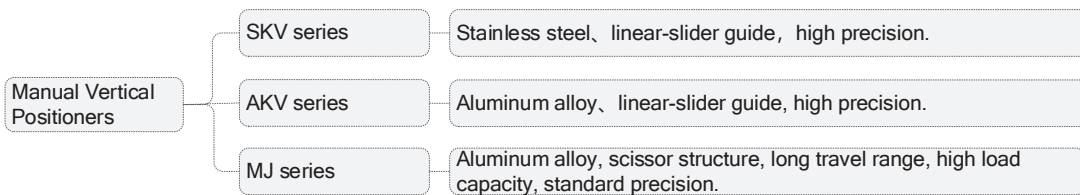


Manual Vertical Positioners



SKV Series Stainless Steel High Precision Vertical Stages



Description:

SKV series is a high precision manual vertical stage with directly lift structure. This series of products are driven by Micrometer and equipped linear slider guide to ensure good motion accuracy when the stage rises and falls. The installation holes of various standard holes on the table are suitable for different needs, and the standard fixed holes below are convenient to combine with other stages to form a multidimensional system.

Features:

- Micrometer drive, high sensitivity.
- Linear slider guide, running smoothly.

Naming rules:

SK V13 A-60Z

Series code:
SK: stainless steel, linear-slider guides

V: vertical stage
A: Drive type: micrometer

Travel range:
6:6mm
13:13mm

Stage surface size:
40:40mm×40mm
60:60mm×60mm
65:65mm×65mm

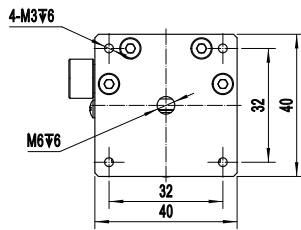
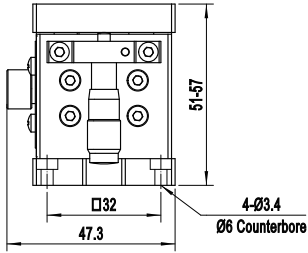
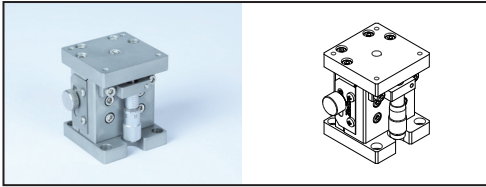
Drive location:
Z: vertical

Selection chart

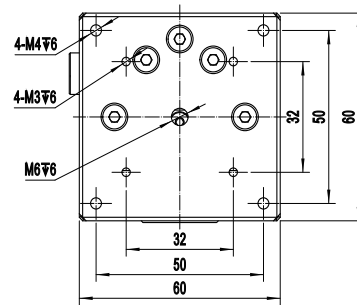
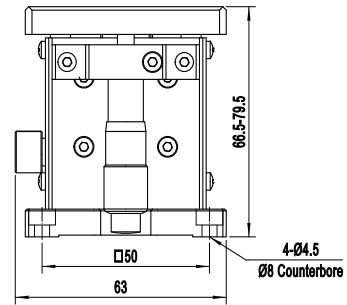
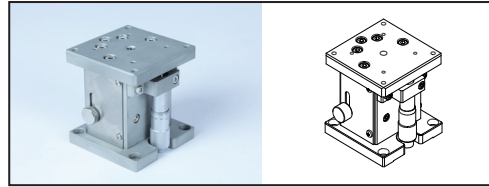
Model	SKV6A-40Z	SKV13A-60Z	SKV13A-65Z
Stage surface size(mm)	40×40	60×60	65×65
Travel range(mm)	6	13	13
Stage surface height range(mm)	51-57	66.5-79.5	66.5-79.5
Lifting mechanism	Directly lift		
Guide mechanism	linear-slider guide		
Drive type	Micrometer		
Drive location	Central and vertical		
Main body material, surface treatment	SUS 304 Stainless steel, sandblasting		
Weight(Kg)	0.43	1.12	1.18
Sensitivity(μ m)	≤ 2	≤ 2	≤ 2
Minimum reading of micrometer(mm)	0.01	0.01	0.01
Height changes by tuning a round of micrometer(mm)	0.5	0.5	0.5
Central load capacity(Kg)	≤ 2	≤ 3	≤ 3
Static parallelism(μ m)	≤ 100	≤ 100	≤ 100

Dimensions:

SKV6A-40Z



SKV13A-60Z



SKV13A-65Z

