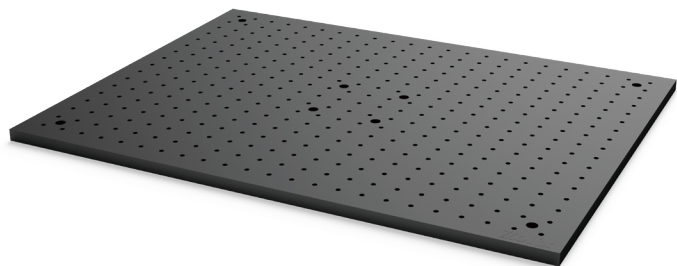


Optical Breadboards

OTSB Series Solid Aluminum Optical Breadboards, 13mm Thickness



Naming rule:

OTSB 30 30 - 13

Series code:
OTSB:Aluminum alloy
breadboard

Width:
20:200mm
30:300mm
45:450mm
⋮

Length:
20:200mm
30:300mm
45:450mm
⋮

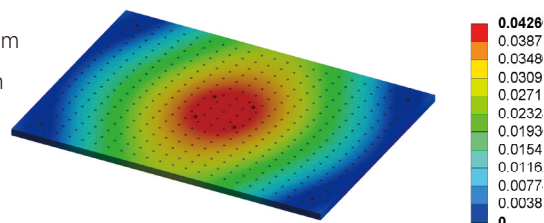
Thickness:
13:13mm

Features:

- Non-magnetic solid aluminum breadboard.
- Matte black processed, low reflection working surface.
- Countersunk through hole for easy installation.

Specifications:

- Material: Aluminum alloy
- Thickness: 13mm
- Surface Flatness: 0.3mm/600mmx600mm
- Mounting holes: M6
- Mounting hole grid: 25mm x25mm
- Mounting hole to borders: 25mm
- Counterbore: M6(depth 7mm)
- Weight: 3Kg/300mmx300mm



Annotations for this figure: When fixing the four corners of the aluminum alloy breadboard with countersunk holes, a force of 120N is applied in the center;

Selection Table:

Model	Size(mm)	L	W	D
OTSB2020-13	200×200×13	200	200	\
OTSB2030-13	300×200×13	300	200	\
OTSB3030-13	300×300×13	300	300	\
OTSB3045-13	450×300×13	450	300	75
OTSB3060-13	600×300×13	600	300	75
OTSB4545-13	450×450×13	450	450	75
OTSB4560-13	600×450×13	600	450	75
OTSB6060-13	600×600×13	600	600	75
OTSB6090-13	900×600×13	900	600	75

Note: Some models do not have dimension D, indicating that this model does not have a center M6 countersunk hole;

Optional accessories:

OTSB-HD100 Optical Breadboard Handles



RBL Mounting Feet



Dimensions:

